

Series W-943-16/25Q

Electrical Three-way Control Valve

Size: DN15-DN500

The Series W-943-16/25Q Electrical Three-way Control Valves are used with Series W-A11 actuators. They are extensively applied to HVAC water systems, boiler systems, heat exchange systems or AHU steam systems to regulate the flow rates of fluids in these systems.

Features

- Equal percentage control characteristic achieves high control precision
- Electronic presetting function facilitates on-site commissioning
- Automatic fault detection and alarm functions
- Overload protection function for the power supply
- V-shaped (cone) sealing ring and spring self-compensation structure result in higher abrasion resistance and longer service life

Pressure-Temperature

- Nominal Pressure: PN16 / PN25
- Temperature Range: -25 C ~150 C

Material

Component	Material
Valve Body	Ductile Iron
Valve Core	Stainless Steel
Valve Stem	Stainless Steel
Spring	Stainless Steel
Sealing	FPM

Operating Principles

Once the valve's actuator receives the control signal from the BA System, it will regulate the valve's opening rate by moving the valve stem, and thus change the system's flow rate.

Specification

- Connection Standard: ISO7005
- Connection Type: Flange Connection
- Flow Deviation: ±5%
- Function: Three-way Mixing / Diverting Control
- Control Characteristic: Equal Percentage
- Leak Rate: ≤ 0.02% Kvs
- Working Medium: Water / Ethylene Glycol / Propylene Glycol

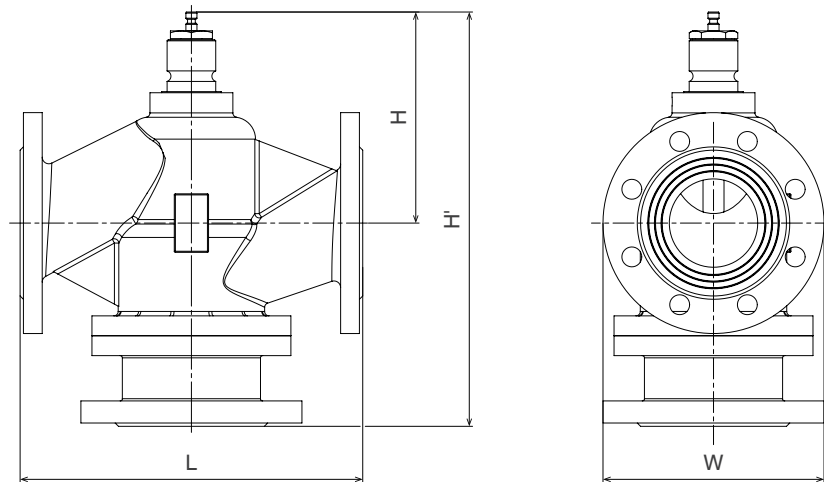


Technical Parameters

Type	Size	Kvs	Stroke (mm)	Actuator Force(N)	Shutoff ΔP(KPa)	Remark
W-943AW015-16Q	DN15	2	20	500	≤800	Mixing Valve
W-943AW020-16Q	DN20	3	20	500	≤800	Mixing Valve
W-943AW025-16Q	DN25	5	20	500	≤800	Mixing Valve
W-943AW032-16Q	DN32	8	20	500	≤800	Mixing Valve
W-943AW040-16Q	DN40	20	20	500	≤800	Mixing Valve
W-943BW050-16Q	DN50	31	20	1000	≤300	Mixing Valve
W-943CW065-16Q	DN65	50	20	1800	≤450	Mixing Valve
W-943HCW080-16Q	DN80	80	20	1800	≤270	Mixing Valve
W-943FCW080-16Q	DN80	80	20	1800	≤270	Diverting Valve
W-943HDW100-16Q	DN100	125	40	3000	≤200	Mixing Valve
W-943FDW100-16Q	DN100	125	40	3000	≤200	Diverting Valve
W-943HDW125-16Q	DN125	200	40	3000	≤150	Mixing Valve
W-943FDW125-16Q	DN125	200	40	3000	≤150	Diverting Valve
W-943HDW150-16Q	DN150	300	40	3000	≤100	Mixing Valve
W-943FDW150-16Q	DN150	300	40	3000	≤100	Diverting Valve
W-943HEW200-16Q	DN200	520	40	5000	≤130	Mixing Valve
W-943FEW200-16Q	DN200	520	40	5000	≤130	Diverting Valve
W-943HEW250-16Q	DN250	750	40	5000	≤80	Mixing Valve
W-943FEW250-16Q	DN250	750	40	5000	≤80	Diverting Valve
W-943HFW300-16Q	DN300	1200	100	16000	≤250	Mixing Valve
W-943FFW300-16Q	DN300	1200	100	16000	≤250	Diverting Valve
W-943HFW350-16Q	DN350	1800	100	16000	≤150	Mixing Valve
W-943FFW350-16Q	DN350	1800	100	16000	≤150	Diverting Valve
W-943HFW400-16Q	DN400	2200	100	16000	≤100	Mixing Valve
W-943FFW400-16Q	DN400	2200	100	16000	≤100	Diverting Valve
W-943HFW450-16Q	DN450	2600	100	16000	≤80	Mixing Valve
W-943FFW450-16Q	DN450	2600	100	16000	≤80	Diverting Valve
W-943HFW500-16Q	DN500	3200	100	16000	≤60	Mixing Valve
W-943FFW500-16Q	DN500	3200	100	16000	≤60	Diverting Valve

*DN15-DN65 are mixing valves. They can be used as diverting valves when installed in different direction. Other performance parameters of PN 16 are the same as those of PN25.

Installation Dimensions



Size	L(mm)	H(mm)	H'(mm)	W(mm)	H-1(mm)	H-2(mm)	H-3(mm)	H-4(mm)	Weight(Kg)
DN15	130	107	213	95	269	378	407	/	5.5
DN20	150	107	213	105	269	378	407	/	5.5
DN25	160	112	223	115	274	383	412	/	6.5
DN32	180	121	242	140	283	392	421	/	9.4
DN40	200	126	248	150	288	397	426	/	11
DN50	230	136	272	165	298	407	436	/	14.8
DN65	290	166	322	185	328	437	466	/	22.5
DN80	310	196	381	200	358	467	496	/	28.8
DN100	350	238	440	220	/	483	512	/	40.6
DN125	400	233	473	250	/	504	533	/	55.4
DN150	480	247	517	285	/	518	547	/	76.3
DN200	500	339	659	340	/	610	639	/	125.6
DN250	600	391	791	405	/	662	691	/	230
DN300	Mixing	700	475	932	460	694	723	1074	369
	Diverting	700	538	995	/	757	786	1137	369
DN350	788	565	1085	520	/	/	/	1164	521
DN400	912	615	1210	580	/	/	/	1214	643
DN450	980	586	1266	640	/	/	/	1187	758
DN500	978	650	1400	715	/	/	/	1247	926

*H-1: when connected to a 500N/1000N actuator

H-2: when connected to an 1800N/3000N/5000N actuator without manual lever

H-3: when connected to an 1800N/3000N/5000N actuator with manual lever

H-4: when connected to a 16000N actuator